



Block 22 a/b IJburg housing on an artificial island in Amsterdam

apartments and terraced housing, 2003 Amsterdam (NL)



facade waterside



IJburg, Amsterdam



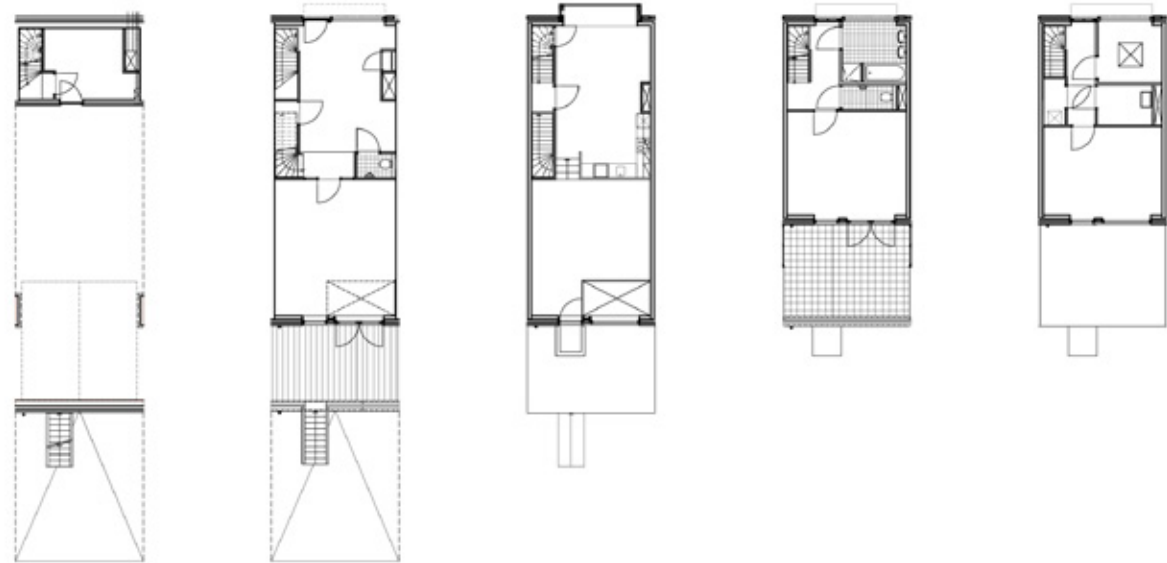
Block 22 a/b

Block 22a/b on the Big Harbor Island consists of apartments and single-family houses designed by two different architects. The apartments are situated on both ends of the block. The single-family houses of both architects are randomly placed between both ends, so the

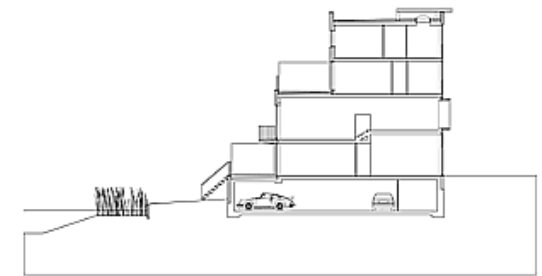
Block 22 a/b IJburg housing on an artificial island in Amsterdam



street facade



floor plans



section

block as whole looks as the sum of individual houses. This appearance is being strengthened by the vertical lay-out of the facade design.

Part of the apartment section is raised to create an tranquil inner courtyard which

gives access to the apartments and to three set-back single-family houses which are placed on the edge of the water.

A parking garage underneath provides direct access to apartments and houses.

The height of the water side of the block is significantly lower than street level. The private outdoor spaces of the houses therefore have a 'belvedere' terrace and a lower garden close to the water surface.



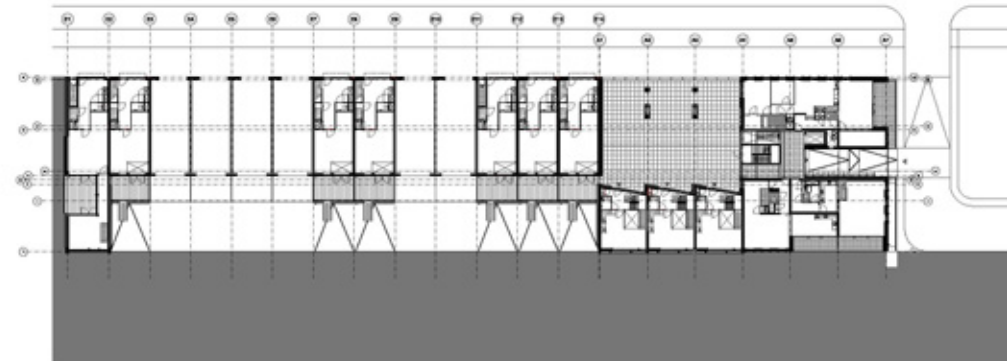
Block 22 a/b IJburg housing on an artificial island in Amsterdam



courtyard with familyhouses



apartments and courtyard



overview block 22a/b

with / for:

